

226ERS®

UCI

**GRAVEL
WORLD SERIES**

GIRONA COSTA BRAVA | SPAIN

**INCLUDED
INCLUDED
INCLUDED**



SEPTEMBER 20



Diputació de Girona



Ajuntament de Girona

esportcat

Generalitat de Catalunya



Costa Brava Pirineu de Girona

226ERS

Panaracer

SHIMANO

PAS NORMAL STUDIOS®
INTERNATIONAL CYCLING CLUB



Càrniques de Julià, s.a.

DT SWISS

GOBIK®

GRAVAA



SPORT BIARRITZ

UCI



SEA OTTER EUROPE

POLVU

GARMIN

wikiloc

OCISPORT

gironagravelworldseries.com

gironagravelride

gironagravelworldseries.com

DESCRIPTION

The UCI Gravel World Series has confirmed the presence of the Sea Otter Europe in the 2025 season. After the success of its first year, the best gravel event on the planet will once again descend on Girona for the penultimate race of the sport's most demanding calendar. The Catalan city is doubling down on its commitment to cycling and will host the event on September 20th as part of the biggest edition of the festival.

This will be the final UCI Gravel World Series qualifying round before the Gravel World Championships, ensuring maximum excitement and competitiveness for both professionals and amateurs.

PROGRAM

FRIDAY, SEPTEMBER 19

12:00 – 19:15 - Race Office opens for race number collection.

SATURDAY, SEPTEMBER 20

09:00 -10:00 - Delivery of backpacks in Juia (departure area).

10:30 - Start of the UCI Gravel World Series by groups.

LOCATION

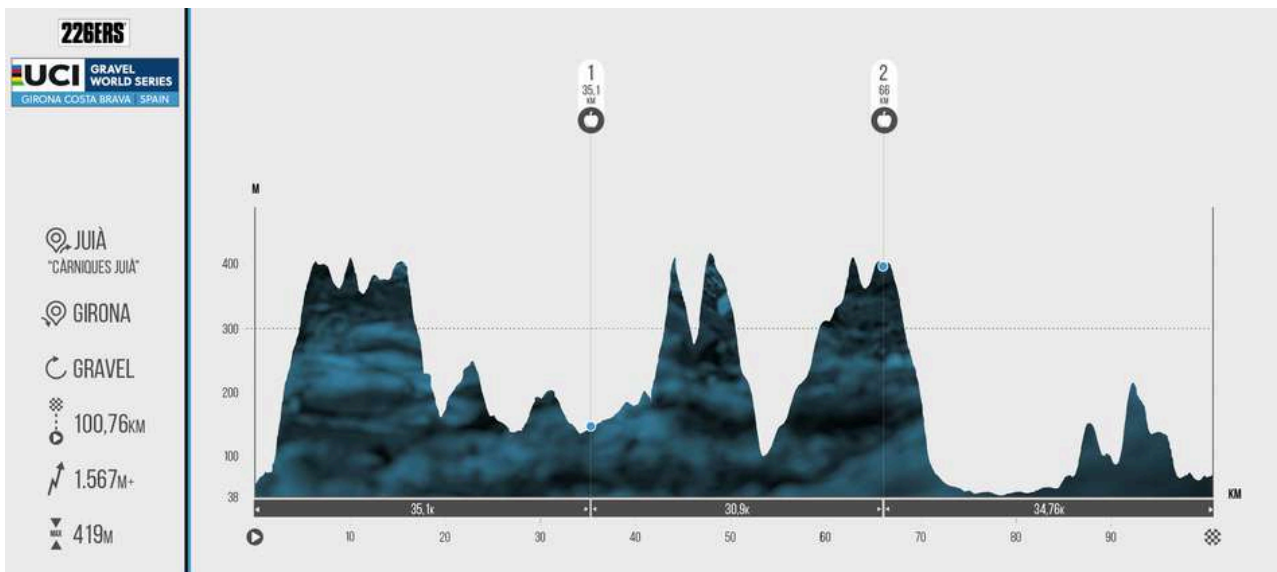
In Càrniques Juià, the start of the next edition of the Uci Gravel World series will take place, where it will take place around Girona and Les Gavarres.

How to get there?

<https://maps.app.goo.gl/Y9FaBG6ZHUkiefXn6>



TRACK AND PROFILE



TRACK AND SUPPLIES

SUPPLY 1 SOLID AND LIQUID UCI AND NON-UCI TEAMS

PK of the test: 35.1 km.

Location of refreshment station 1 - 41°52'04.8"N 2°53'21.7"E

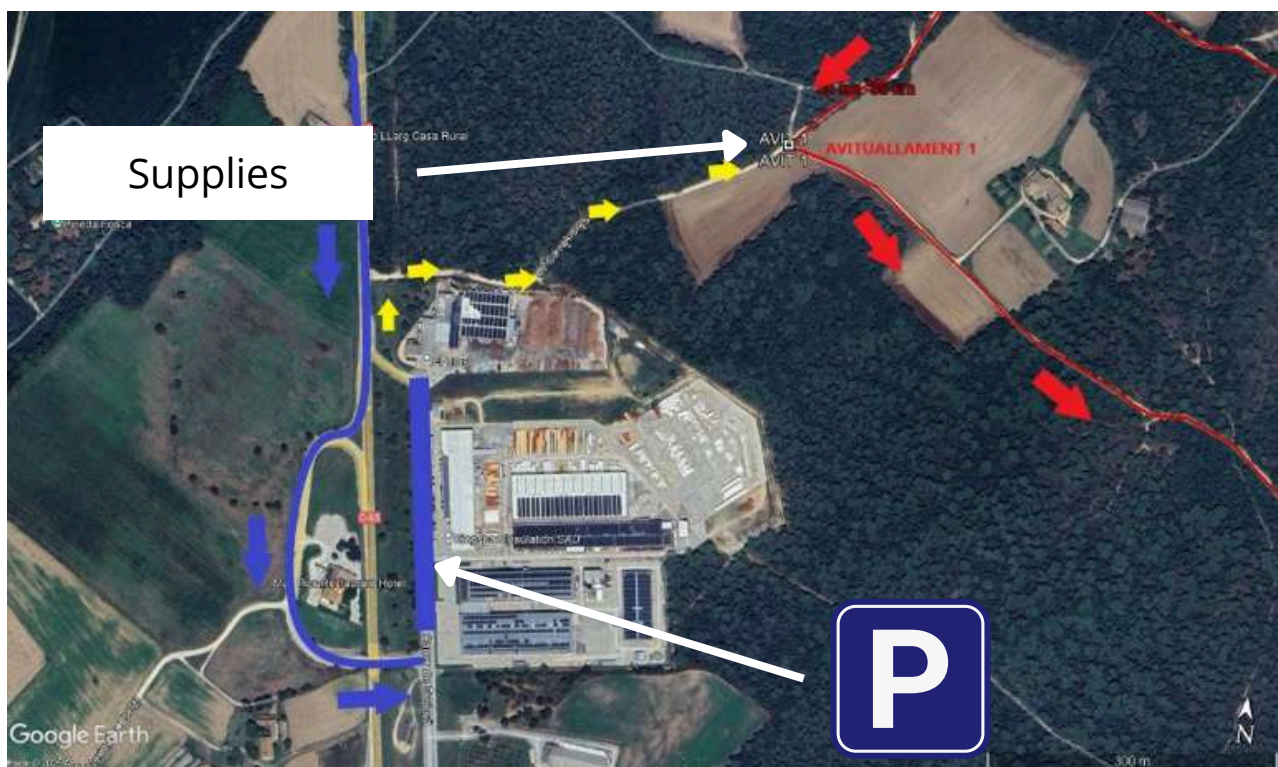
<https://maps.app.goo.gl/mydgajnbttnujgtw9>

Parking location Refreshment 1 - 41°51'54.0"N 2°53'06.6"E

<https://maps.app.goo.gl/nEkoDfozMPaN8ep48>

Parking located in the industrial estate, pedestrian access to the refreshment area, 300m walk.

Schedule: 11:00 to 12:30 (11:30 estimated first runner passes).



XTRA

Robust.
Intuitive.
Consistent.



¡Descúbrelo!

SHIMANO

REFRESHMENT 2 ORGANIZATION ONLY

At kilometer 66 of the race, there will be a solid and liquid refreshment station, designed for participants to replenish their strength at a key point along the route.

This refreshment station will be for the sole and exclusive use of the organizers, with the aim of ensuring an orderly and efficient service for all cyclists and avoiding overcrowding in the area.

REFRESHMENT 3 UCI TEAMS AND NON-UCI TEAMS

Access to this area is from the start parking lot, located in Juià. Parking is mandatory in the official start parking lot. From there, the path to the Technical Zone is just a two-minute walk, and the path will be signposted.



NEW XS SIZE



FINAL SUPPLIES

At the final refreshment station, located within the Sea Otter Europe festival grounds, each participant will be admitted by presenting the identification wristband, which will be given along with their race number when collecting their accreditation.

This bracelet will be essential for accessing the service and ensures that each runner receives their food ration.

The menu will consist of a plate of paella or fideuá, designed to recharge your batteries and enjoy a moment of conviviality after the race in the unique atmosphere of the festival.

BIB VISIBILITY

For the correct development of the test it is mandatory that all participants always wear visible numbers, the back number must be placed on the back of the jersey well fastened and without folds, the front number must be on the front of the bicycle fixed to the handlebar and the seat post number must be placed so that it is clearly visible from the side, since the correct placement and visibility of the numbers allows the organization, judges and photographers to easily identify each rider and guarantees the validity of the times and classifications



ROUTE BOOK

In the route book, you can see the kilometers where the refreshment stations will be located, as well as the expected average speeds for the runners. This information will allow you to better plan your effort and manage the race more safely.

km totals	Passage zone	km	18 km/h	21 km/h	26 km/h	30 km/h
0	Càrniques Juià		10:30	10:30	10:30	10:30
1 1,0 km	roundabout of the GIV-6708 (Juià)	1,0 km	10:33	10:32	10:32	10:32
2 1,1 km	volunteer to prevent car entry	0,1 km	10:33	10:33	10:32	10:32
3 1,2 km	volunteer to prevent car entry	0,1 km	10:34	10:33	10:32	10:32
4 2,0 km	Cross Mas Nadal neighbourhood in Juià	0,8 km	10:36	10:35	10:34	10:34
5 6,5 km	Ride along the GIOV-6703 from PK 9.2 to PK 9.5 (Els Àngels)	5,5 km	10:51	10:48	10:45	10:43
6 6,6 km	Entering the municipality of Quart	0,1 km	10:52	10:48	10:45	10:43
7 10,9 km	Junction with the GIV-6641 at PK 7.5 and ride along GIV-6641R	4,3 km	11:06	11:01	10:55	10:51
8 16,1 km	Entering the municipality of Llambilles	5,2 km	11:23	11:16	11:07	11:02
9 19,7 km	Entering the municipality of Cassà de la Selva	3,6 km	11:35	11:26	11:15	11:09
10 21,7 km	joining asphalt	2,0 km	11:42	11:32	11:20	11:13
11 22,7 km	Cross the GI-664 PK2 (Santa Pellaia)	3,0 km	11:45	11:34	11:22	11:15
12 27,1 km	joining asphalt	5,4 km	12:00	11:47	11:32	11:24
13 35,0 km	Feed zone 1	12,3 km	12:26	12:10	11:50	11:40
14 37,0 km	Entering the municipality of Llagostera	2,0 km	12:33	12:15	11:55	11:44
15 43,0 km	Entering the municipality of Monells	6,0 km	12:53	12:32	12:09	11:56
16 53,5 km	Join the GI-664 at PK 14 (Santa Pellaia)	10,5 km	13:28	13:02	12:33	12:17
17 54,5 km	Leave the GI-664 at PK 13	1,0 km	13:31	13:05	12:35	12:19
18 60,0 km	Join the GIV-6641 at PK 10.5	5,5 km	13:50	13:21	12:48	12:30
19 62,5 km	Leave the GIV-6641 at PK 7.5	2,5 km	13:58	13:28	12:54	12:35
20 66,4 km	Feed zone 2	3,9 km	14:11	13:39	13:03	12:42
21 66,5 km	Join the GIV-6703 at PK 9.3 (Els Àngels)	0,1 km	14:11	13:40	13:03	12:43
22 66,7 km	Leave the GIV-6703 at PK 9.1	0,2 km	14:12	13:40	13:03	12:43
23 71,1 km	Cross the Mas Nadal neighbourhood in Juià	4,4 km	14:27	13:53	13:14	12:52
24 71,8 km	turn left onto unnamed paved road	0,7 km	14:29	13:55	13:15	12:53
25 72,0 km	turn right onto unnamed paved road	0,2 km	14:30	13:55	13:16	12:54
26 73,0 km	Paved road on the left side	1,0 km	14:33	13:58	13:18	12:56
27 74,0 km	Cross the GIV-6701 in Bordils PK 0.1	2,0 km	14:36	14:01	13:20	12:58
28 75,0 km	Pass under the C-66 at PK 24.8	1,0 km	14:40	14:04	13:23	13:00
29 75,2 km	Enter the municipality of Bordils	0,2 km	14:40	14:04	13:23	13:00
30 78,0 km	Enter the municipality of Cervià de Ter	2,8 km	14:50	14:12	13:30	13:06
31 79,2 km	Cross the Ter footbridge	1,2 km	14:54	14:16	13:32	13:08
32 80,8 km	Enter the municipality of Medinyà	1,6 km	14:59	14:20	13:36	13:11
33 85,0 km	Pass under the NII at PK 724.3	4,2 km	15:13	14:32	13:46	13:20
34 86,0 km	Pass under the NIIa at PK 724	1,0 km	15:16	14:35	13:48	13:22
35 90,0 km	Cross the C-66 via the industrial estate bridge	4,0 km	15:30	14:47	13:57	13:30
36 91,3 km	Roundabout leading up to the golf course	1,3 km	15:34	14:50	14:00	13:32
37 93,1 km	roundabout inside the golf course	1,8 km	15:40	14:56	14:04	13:36
38 98,0 km	joining the NIIa side road - sidewalk	12,0 km	15:56	15:10	14:16	13:46
39 98,7 km	cross the NIIa before the Vil·la de Perpinyà roundabout	0,7 km	15:59	15:12	14:17	13:47
40 101,3 km	Finish at Parc de Fontajau	2,6 km	16:07	15:19	14:23	13:52
	Total time		5:37	4:49	3:53	3:22

SIGNALING

The course will be clearly marked to ensure all participants can follow it without difficulty. Red tape will be used along the route, visible at various sections, as well as ties, strategically placed to reinforce the markings.



ADDITIONAL INFORMATION

REFERRAL HOSPITAL

Hospital: Doctor Josep Trueta Avinguda de França, S/N,
17007 Girona Open 24 Hours
Telephone: (+34) 972940200

EMERGENCY CONTACT

Organization: +34 638 602 777
Emergencies: 112

ORGANIZATION

Contact email: hola@ocisport.net

226ERS®

INSTITUTIONAL SPONSORS



HOSTING DESTINATION



TITLE SPONSOR



OFFICIAL SPONSORS



SPONSOR SERIES



SUPPORTED BY



TECHNOLOGY PARTNER



MEDIA PARTNER



OFFICIAL MAPPING



ORGANIZING

